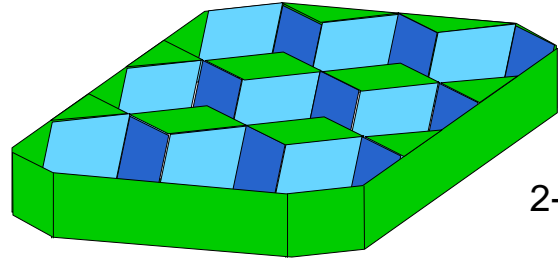
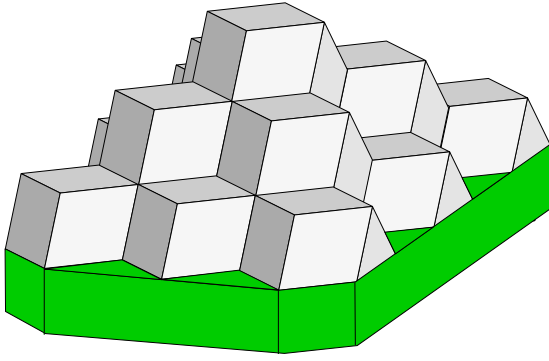
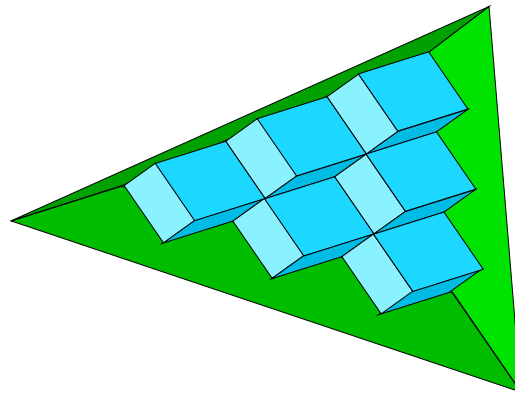
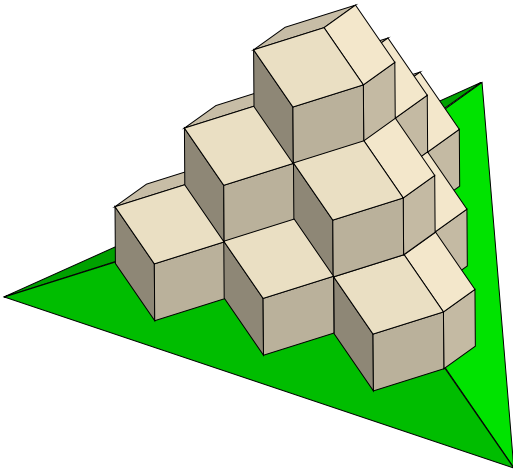


A stack of 10 Rhombic Dodecahedra showing how they pack with 2-fold symmetry



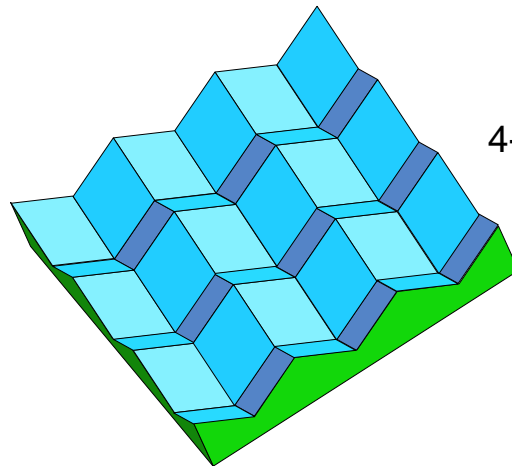
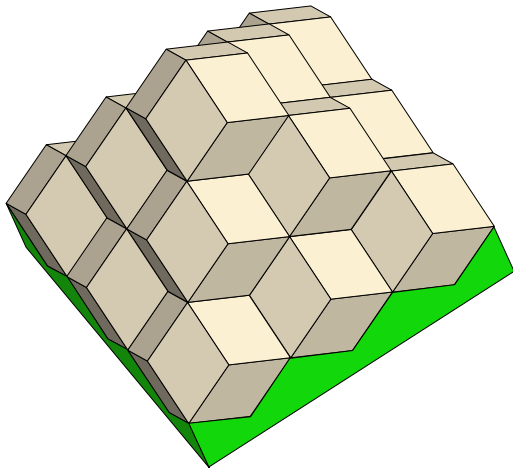
2-fold base

A stack of 10 Rhombic Dodecahedra showing how they pack with 3-fold symmetry



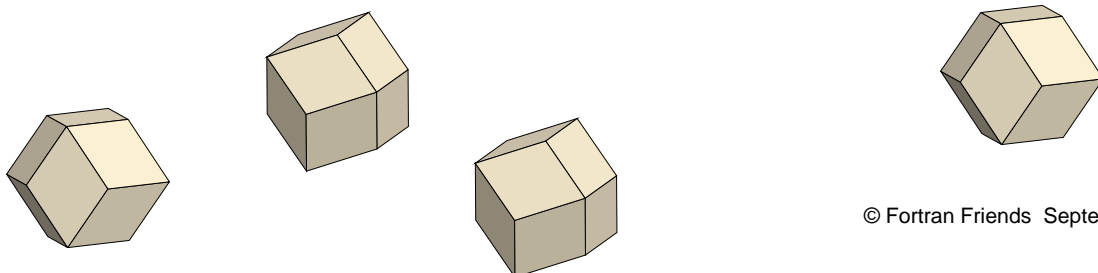
3-fold base

A stack of 10 Rhombic Dodecahedra showing how they pack with 4-fold symmetry

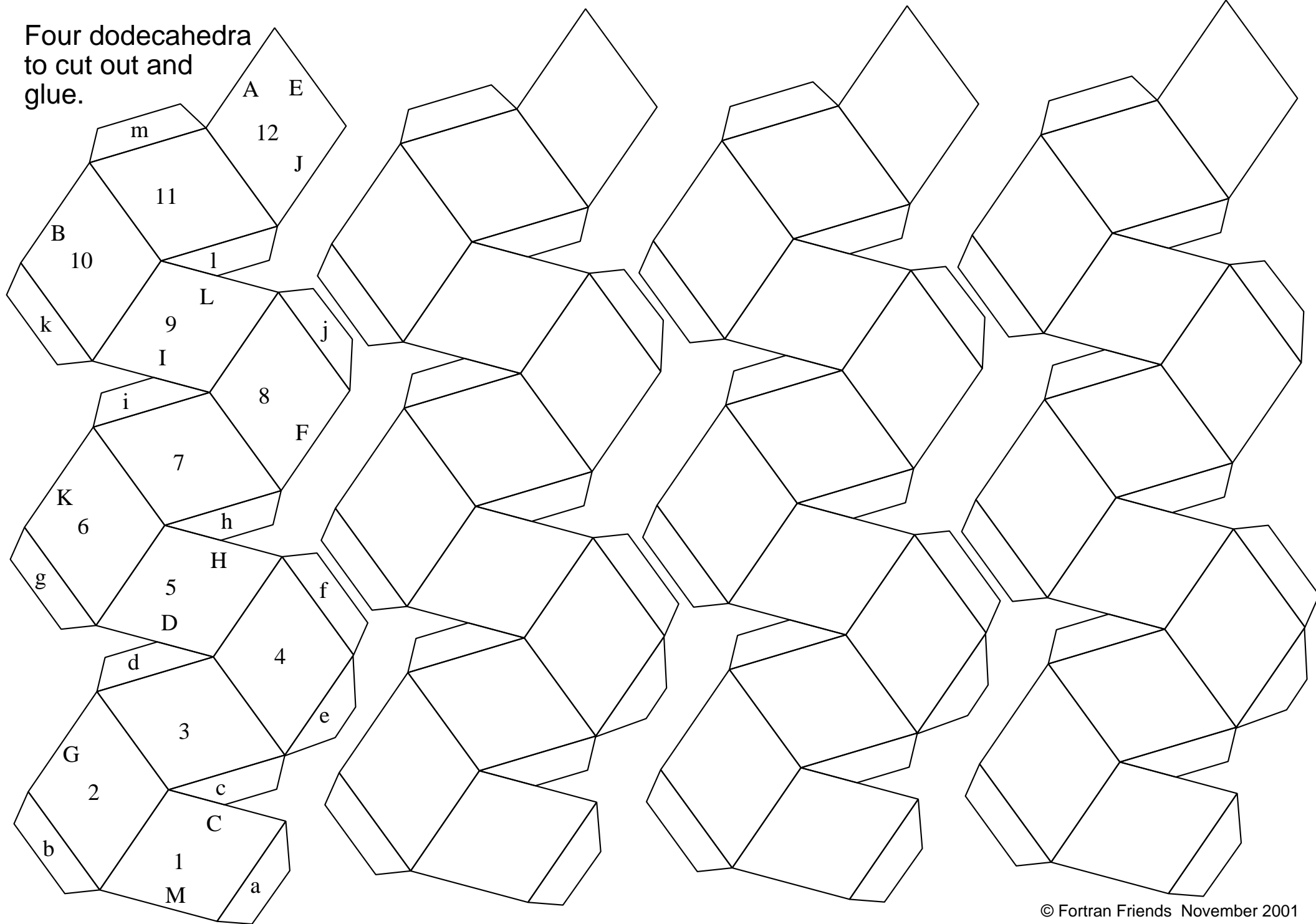


4-fold base

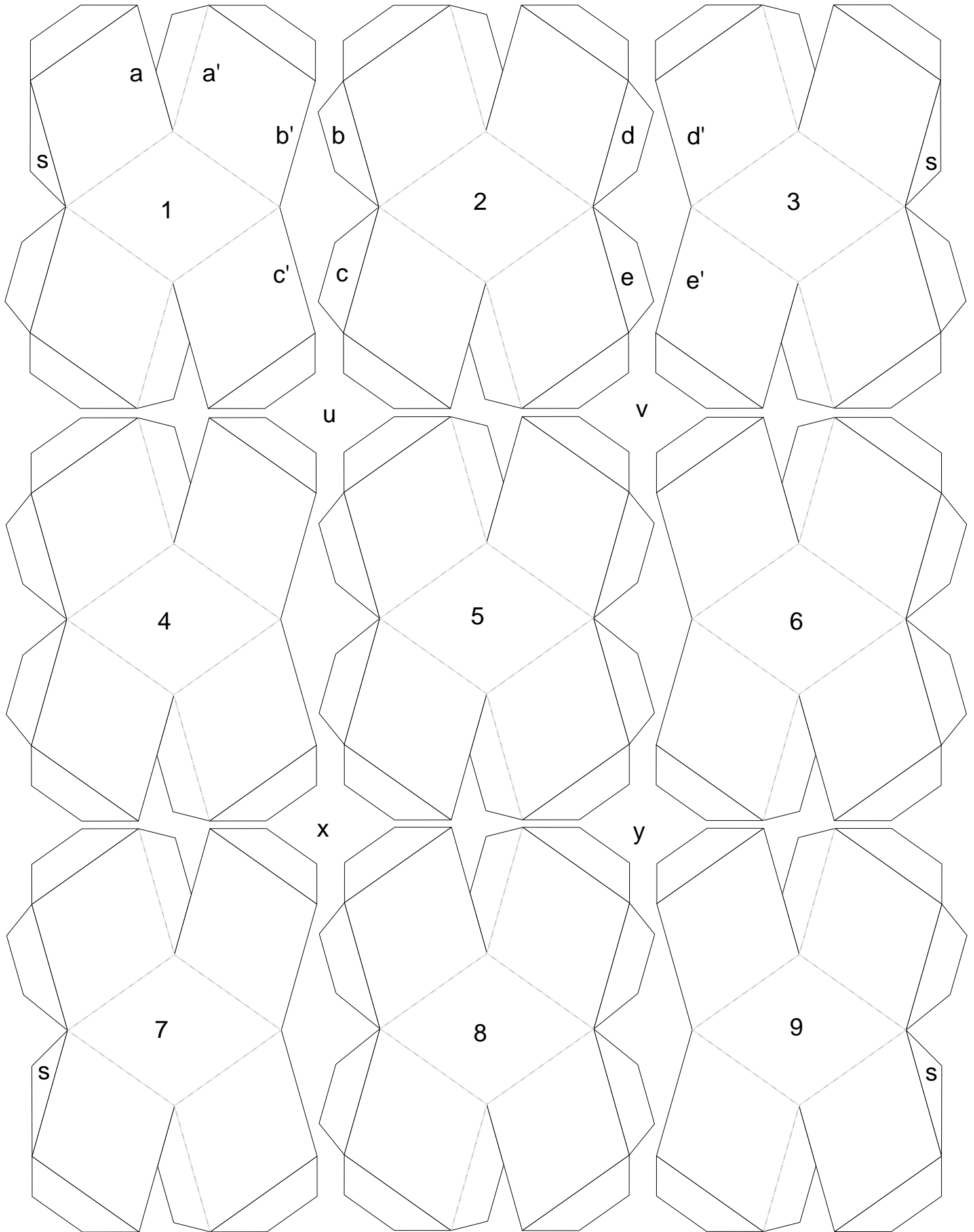
Rhombic Dodecahedra



Four dodecahedra
to cut out and
glue.



Cups for two-fold symmetry arrangement. This part is shown blue in page 1

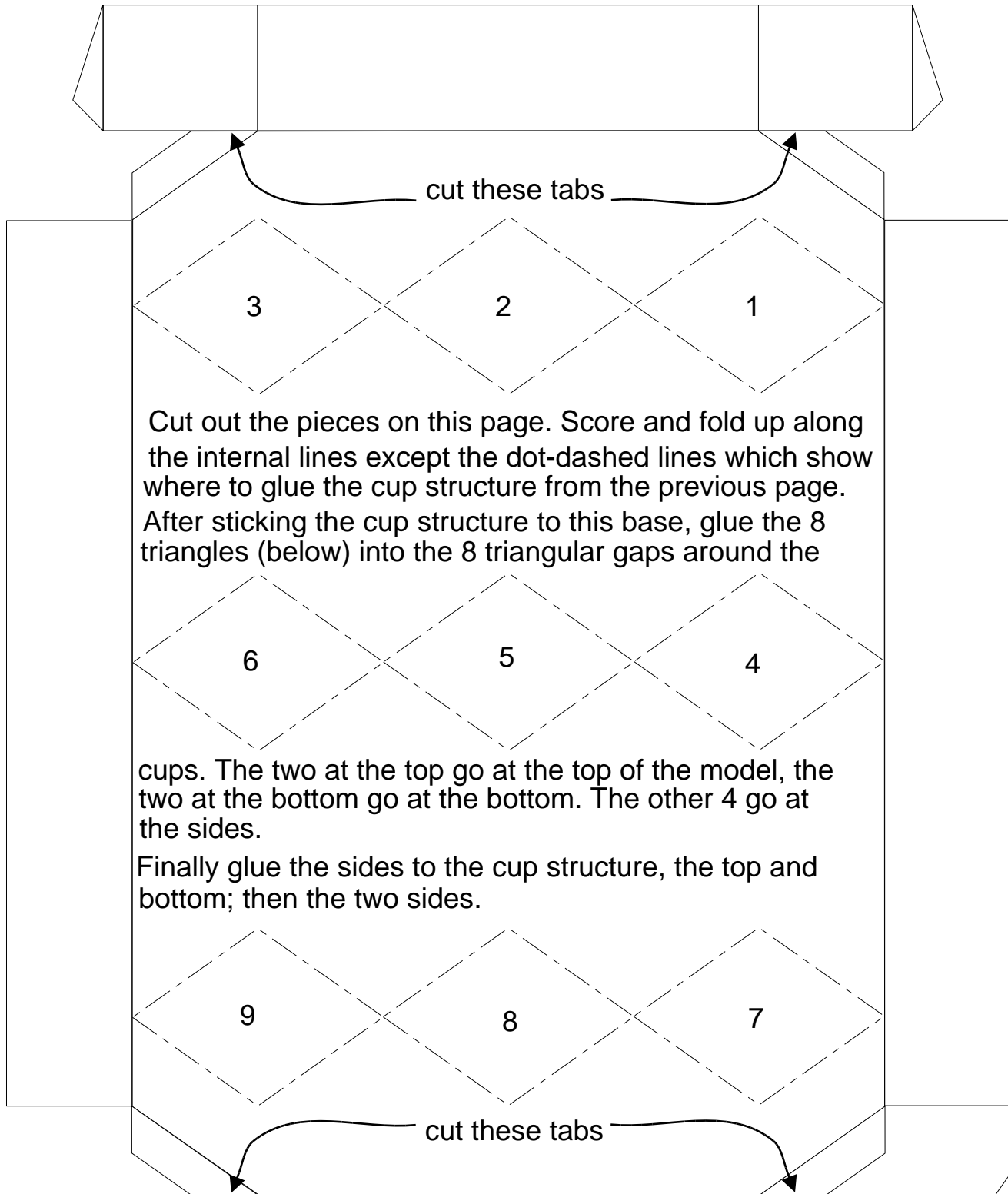


Cut out the pieces, score along the lines and crease down along the dots, up along the lines. Make the pieces into cups by gluing a to a' etc.

Next join the cups into 3 rows of 3 by gluing b to b' etc.

Join the 3 rows using the 4 diamonds on the other sheet at points u, v, x, y making sure that the smaller tabs (s) are at the ends

Base for two-fold symmetry arrangement. This part is shown green in page 1

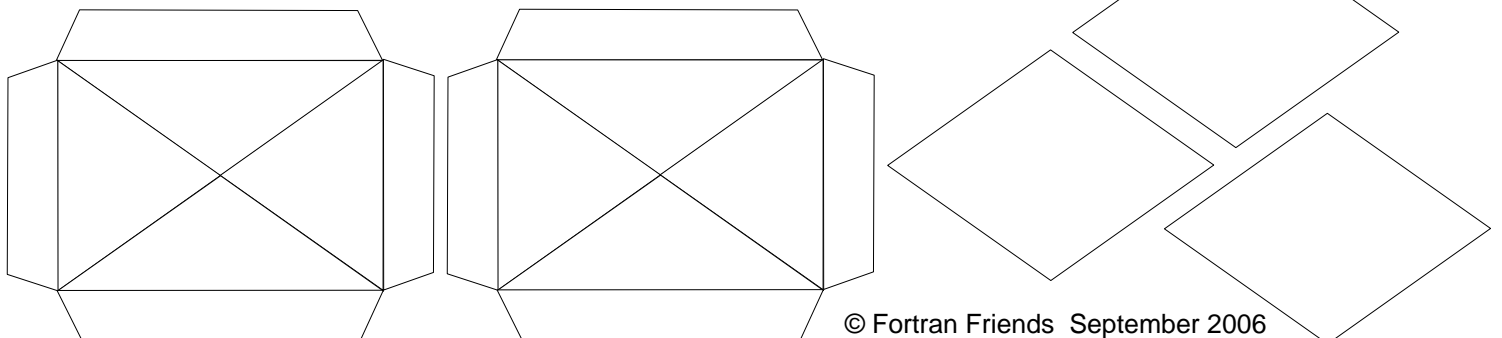


Cut out the pieces on this page. Score and fold up along the internal lines except the dot-dashed lines which show where to glue the cup structure from the previous page. After sticking the cup structure to this base, glue the 8 triangles (below) into the 8 triangular gaps around the

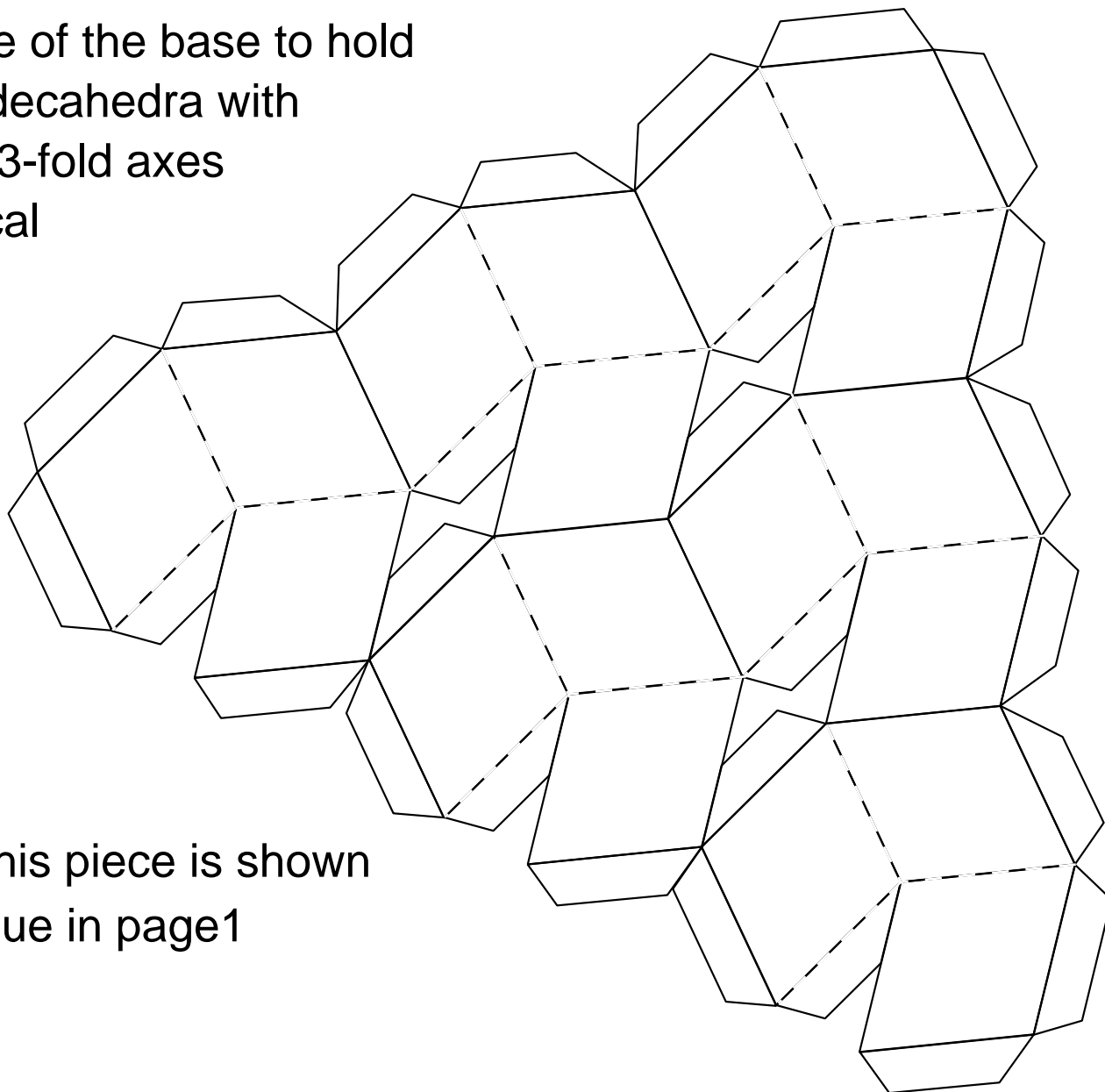
cups. The two at the top go at the top of the model, the two at the bottom go at the bottom. The other 4 go at the sides.

Finally glue the sides to the cup structure, the top and bottom; then the two sides.

Cut these 'flags' into 4 triangles, each with a tab.



Inside of the base to hold
6 dodecahedra with
their 3-fold axes
vertical



This piece is shown
blue in page1

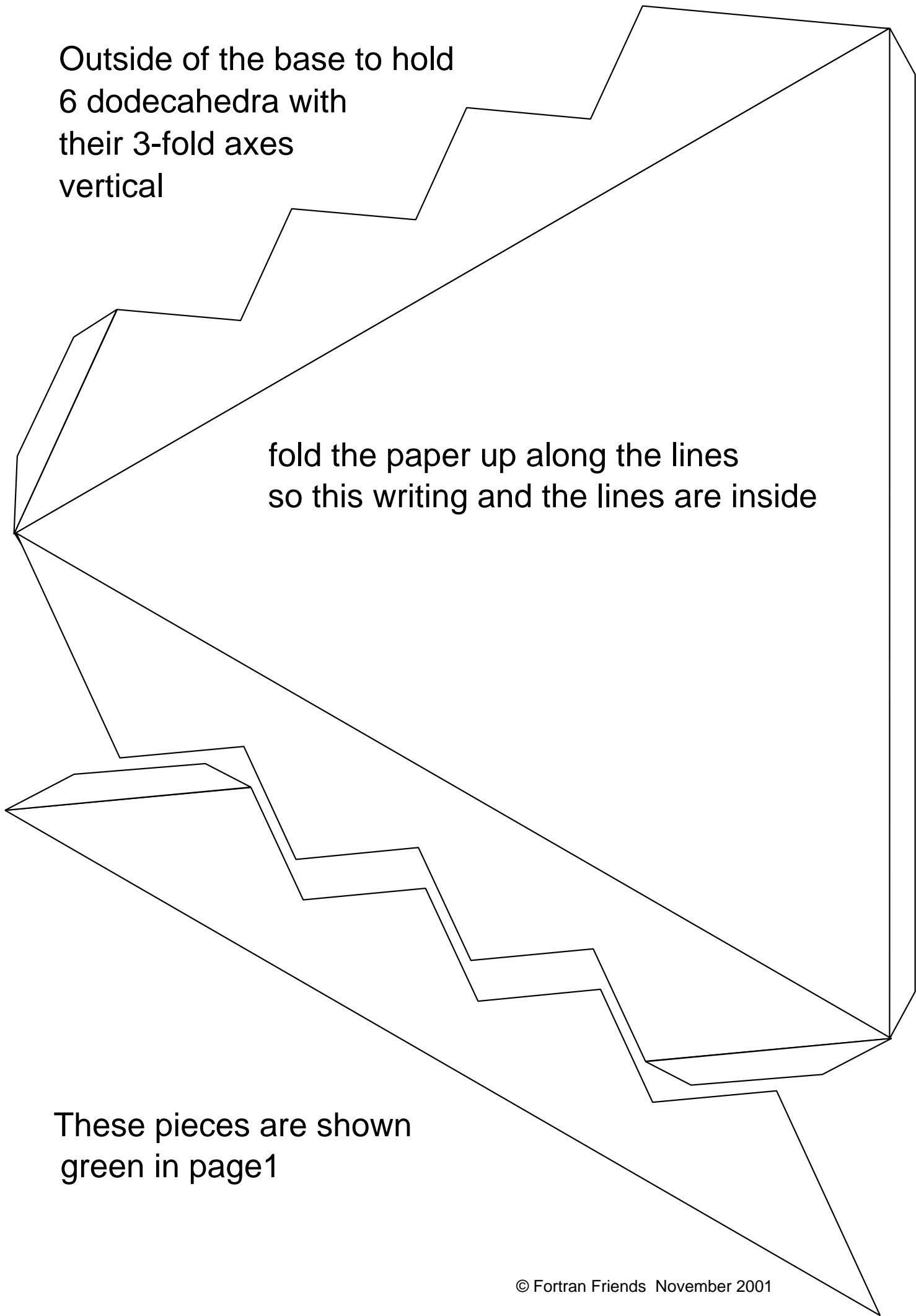
Bend down along the dotted lines;
bend up along the solid lines.

This makes 3-sided cups for
the dodecahedra when
seen from the other
side of the card.

Outside of the base to hold
6 dodecahedra with
their 3-fold axes
vertical

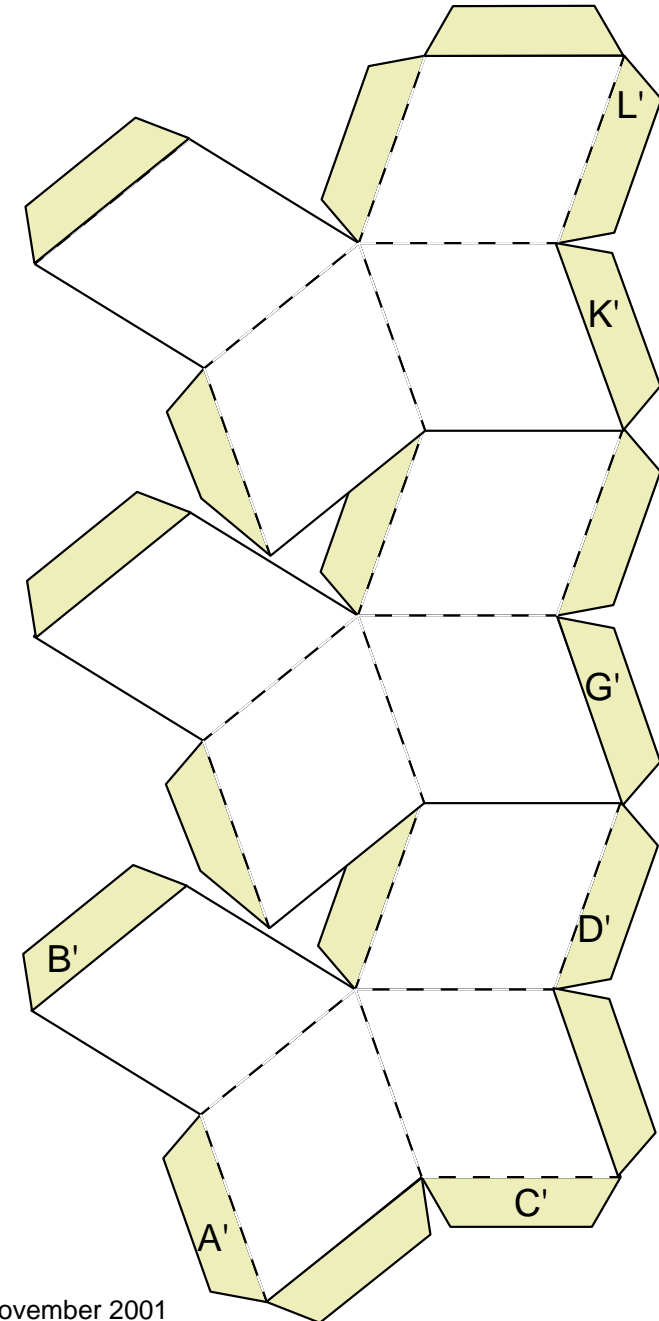
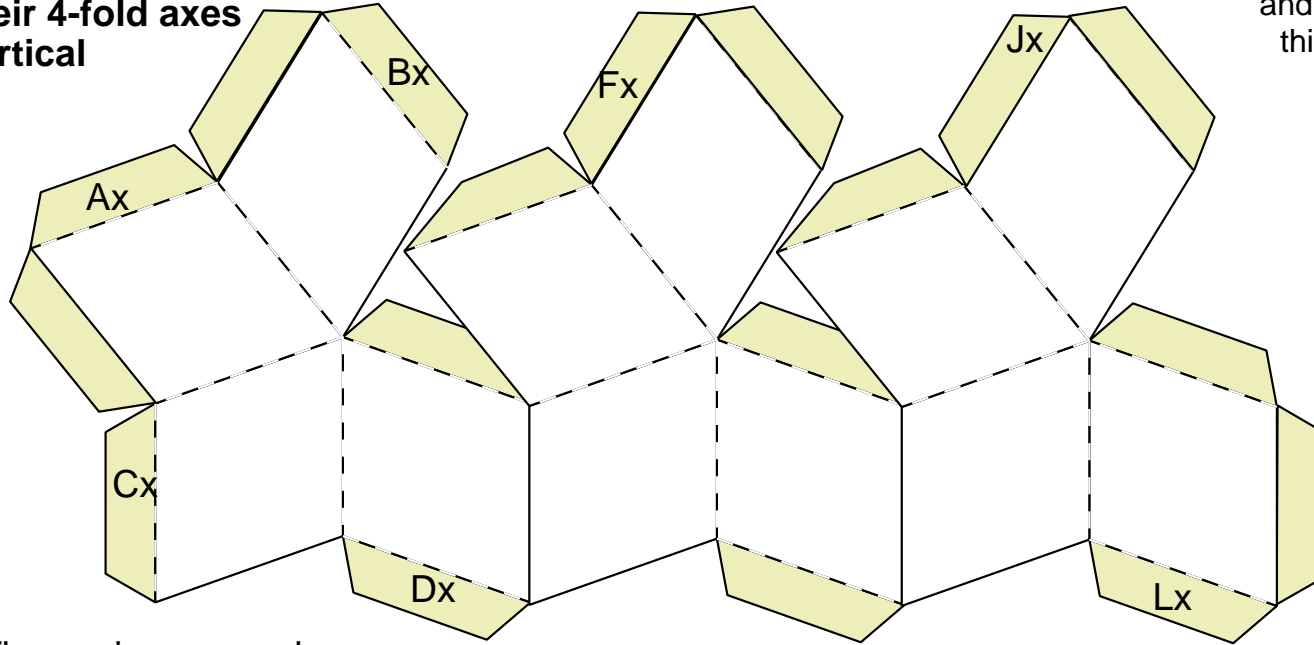
fold the paper up along the lines
so this writing and the lines are inside

These pieces are shown
green in page1

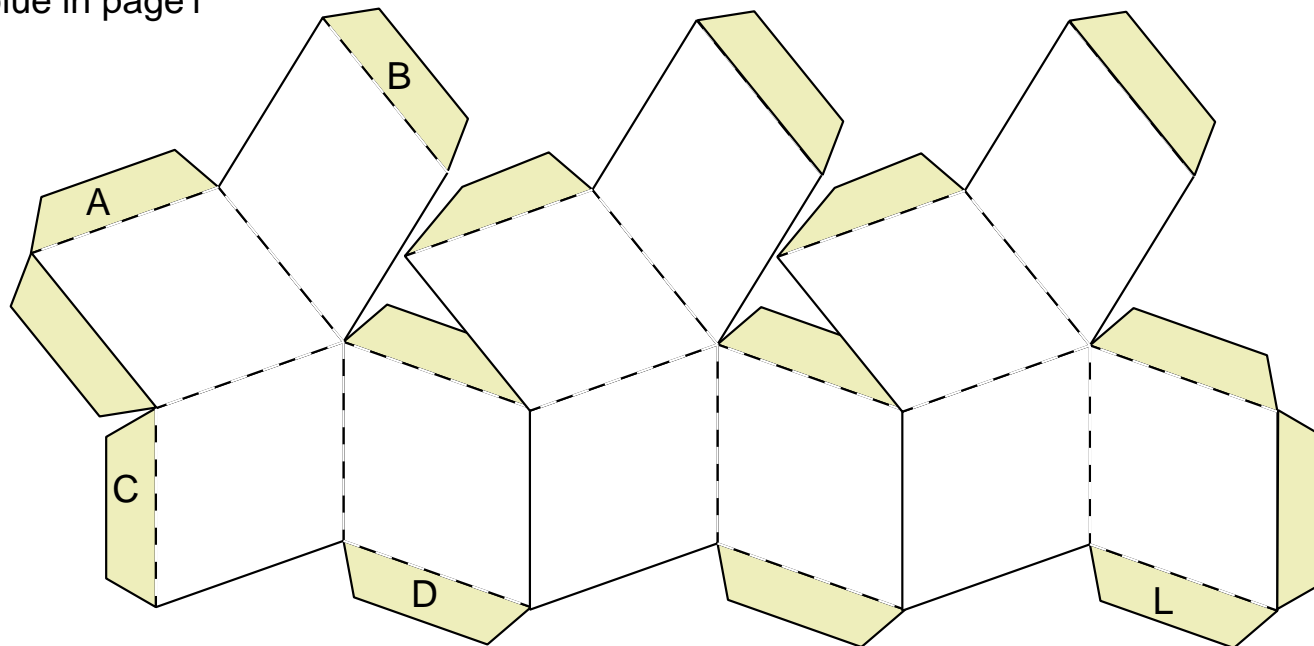


**Inside of the base to hold
9 dodecahedra with
their 4-fold axes
vertical**

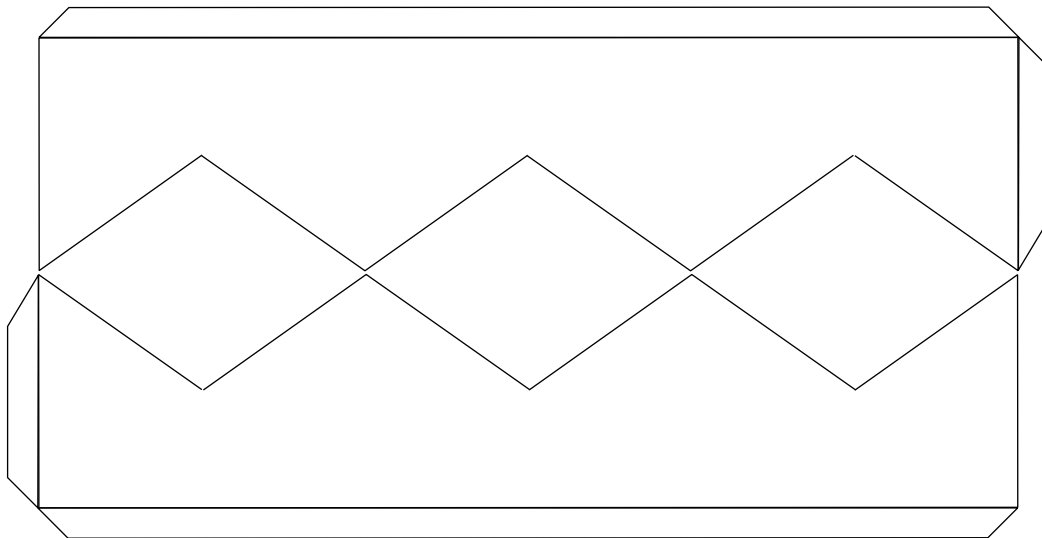
score along the dotted lines and stick up the sides to make 4 sided pockets
connect A,B to Cx Dx and the rest of the tabs on that strip
and C D to A' B' and the rest of the tabs on that strip
this should make a set of pockets in a square 3 x 3



These pieces are shown
blue in page1



Outside of the
base to hold 9
dodecahedra
with their 4-fold
axes vertical.



These pieces
are shown
green in
page1

